

## START

### 1 Mannheim (1840s):

This village was named for the German city on the Rhine River, an area where many immigrants to Waterloo County originated. Note the St. James Evangelical Lutheran Church (1873) and cemetery.

### 2 Petersburg (1838):

Petersburg was named after Peter Wilker, an original settler. Note the Georgian-style Country Inn (1855) at the crossroads and several historic homes.

### 3 St. Agatha (1824):

This village is the historical centre of Catholicism in Waterloo County, and first home of St. Jerome's College (1865). It was settled originally by Amish Mennonites and then by Roman Catholics and Lutherans from Alsace-Lorraine. Historical buildings include two former inns, a former school house (1855), a church and a cemetery chapel (1857).

### 4 Shrine of the Sorrowful Mother:

Built in 1857, this cemetery chapel contains over 100 relics of famous Catholic saints and sacred places. Typifying the Swiss and Bavarian style, it is decorated with religious paintings imported from Munich, Germany. It is open Sundays 1-4p.m., May to October.

### 5 The Baden Hills:

The hills are a large "kame moraine", a huge pile of rock and gravel left about 1,500 years ago by the retreating Wisconsin ice sheet.

### 6 Baden (1854):

Baden was the birthplace of Sir Adam Beck (1857-1925) founder of Ontario's public hydro-electric system. Note the present day tavern which is the former Baden Hotel (1874).

### 7 Castle Kilbride:

This magnificent house was home to James Livingston, the "Flax and Linseed Oil King". It is noted for its Italianate style and interior murals, and is designated as a national historical site. Open to the public Tuesday-Sunday year round, 1:00 - 4:00p.m.

### 8 Historic Bridges:

The Nith Valley is graced by many historic truss bridges including the Shade Street Bridge (1953), the Hartman Bridge (1936), the Holland Mills Bridge (1910), the Bridge Street Bridge (1913) and the Waterloo-Oxford Road Bridge (1912). There is also a privately owned and constructed pedestrian suspension bridge near Luxemburg.

### 9 New Hamburg (1830s):

In 1834, the Asiatic cholera almost wiped out the original settlers. The next wave of settlers who arrived in the late 1830's to early 1840's were German and Scottish. The town became an important centre for milling and farm machinery production. The New Hamburg core area is designated as a Heritage Conservation District. The town is also home to the largest waterwheel in North America, and the Mennonite Relief Sale held annually on the last Saturday in May.

### 10 Haysville (1830s):

This location where the Huron Road crossed the Nith River was settled by immigrants from the British Isles attracted by offers of land from the Canada Land Company. The name originated from its first official postmaster, John Hays, appointed in 1853; before that time it had been called Jonesboro and later Wilmot Village.

### 11 Optional Loop:

Turn right on Tye Road to travel through a scenic area that is home to several wildlife sanctuaries.

### 12 Huron Road (1827-28):

Dr. William "Tiger" Dunlop of the Canada Company opened this Heritage Highway as a 95-mile corduroy road connecting the newly established town sites of Guelph and Goderich. It was improved the following year to promote the sale of Company lands in the million-acre Huron Tract, comprising parts of modern Huron, Perth, Middlesex and Lambton Counties. The lookout point from the hill at Pinehill cemetery provides a vista of much of Wilmot Township.

### 13 New Dundee (1830):

Originally settled by John and Frederick Millar. This village was home of William J. Wintemberg (1876-1941) an outstanding Canadian archaeologist who gained international recognition as an authority on Iroquoian prehistory.

## Nith Valley Trail

### Bridges, Churches and Pioneer Cemeteries



*This driving tour commences on the edge of Kitchener and begins by heading west through the historic German Block. As you travel through the countryside along the township's pioneer settlement roads, you will pass by Georgian style stone houses, historic crossroad settlements, and a number of churches and their adjoining cemeteries. Points of interest include the Shrine of the Sorrowful Mother in St. Agatha, Castle Kilbride in Baden and the Heritage Conservation District in the core area of New Hamburg.*

*There are numerous places to stop along the way for a stroll and an opportunity to enjoy a picnic along the banks of the Nith River in New Hamburg or by Alder Lake in New Dundee.*

*As you travel south through the Nith River valley, enjoy the scenic valley lands and wildlife preservation areas. Take note of the heritage bridges you will cross along the way. Finally you will travel on the historic Huron Road passing Pinehill Pioneer Cemetery and on the scenic Bethel Road towards New Dundee.*

*For more detailed historic information on this area visit the Region's website or contact Heritage Wilmot/Castle Kilbride at (519) 634-8444.*

*STARTS at the corner of Fischer-Hallman and Bleams Road, the location of the historical settlement of Williamsburg. Begin by travelling west on Bleams Road.*

*Note: Some roads are gravel and several older bridges are single lane with weight restrictions. Please drive with caution.*

*Refreshments and/or public washrooms may not be available along rural sections of the route.*



Region of Waterloo

HERITAGE PLANNING ADVISORY COMMITTEE

For more information, contact  
PLANNING, HOUSING AND COMMUNITY SERVICES  
at the Region of Waterloo (519) 575-4047  
or email [planninginfo@region.waterloo.on.ca](mailto:planninginfo@region.waterloo.on.ca)

[www.region.waterloo.on.ca](http://www.region.waterloo.on.ca)

## Tour Three

TOWNSHIP OF WILMOT

Historical  
DRIVING TOURS  
IN  
Waterloo Region

### Bridges, Churches and Pioneer Cemeteries



Wilmot Township S.S. No. 6 School, Haysville x.961.069.001

Distance: 75 km

Time: Approx. 2 hours & 30 min.

## Nith Valley Trail

**Baden Points of Interest:**  
 Castle Kilbride National Historic Site, EJ's Tavern/former Baden Hotel, Old Tin Shop

**St. Agatha Points of Interest:**  
 St. Agatha Roman Catholic Church, cemetery and cemetery chapel, schoolhouse, former Kaiser Hotel, former Prince of Wales Hotel/Doersom Inn.

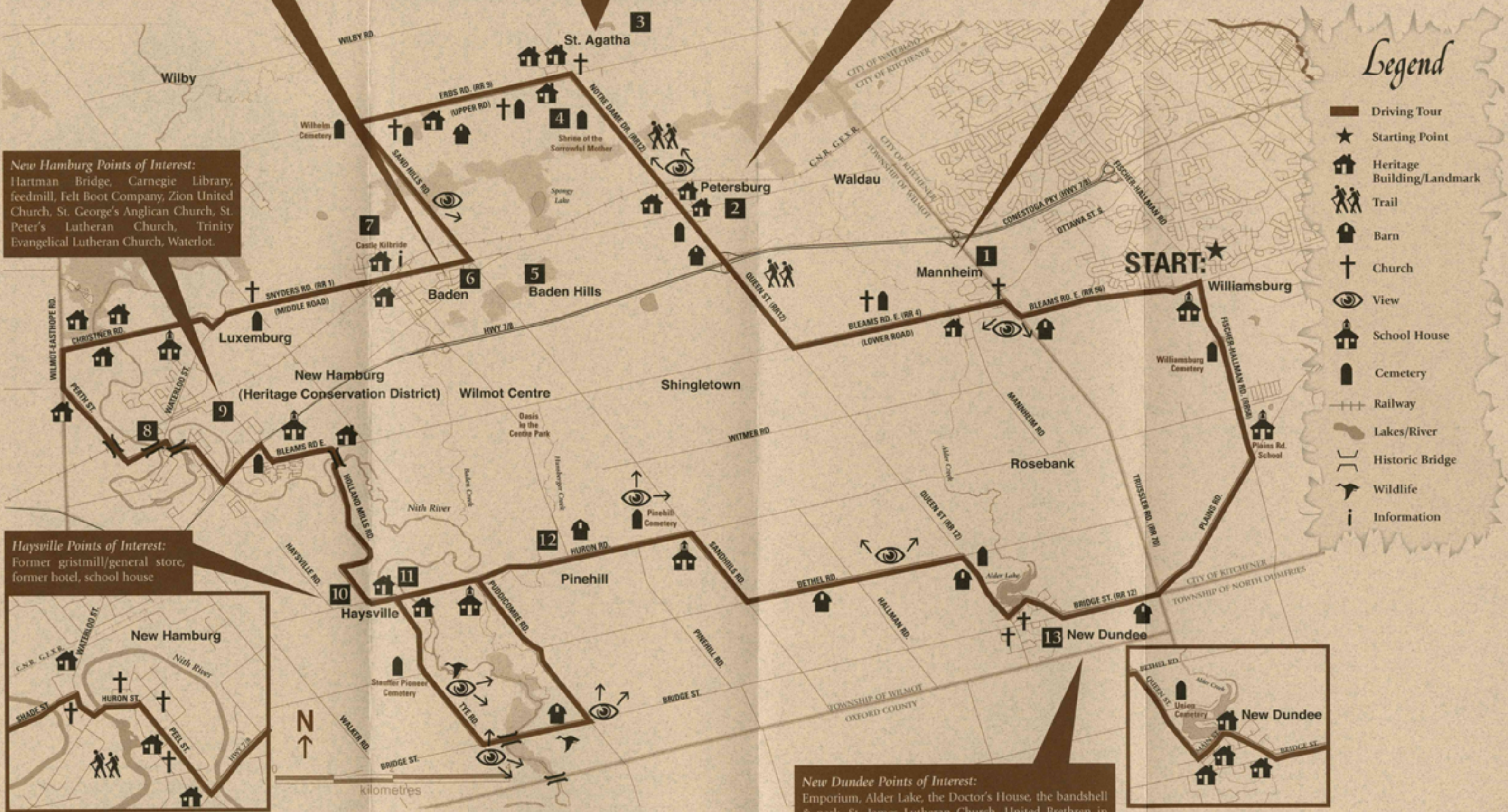
**Petersburg Points of Interest:**  
 Blue Moon Hotel and cemetery.

**Mannheim Points of Interest:**  
 St. James Evangelical Lutheran Church and cemetery.

**New Hamburg Points of Interest:**  
 Hartman Bridge, Carnegie Library, feedmill, Felt Boot Company, Zion United Church, St. George's Anglican Church, St. Peter's Lutheran Church, Trinity Evangelical Lutheran Church, Waterlot.

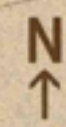
**Haysville Points of Interest:**  
 Former gristmill/general store, former hotel, school house

**New Dundee Points of Interest:**  
 Emporium, Alder Lake, the Doctor's House, the bandshell & park, St. James Lutheran Church, United Brethren in Christ Church.



### Legend

- Driving Tour
- Starting Point
- Heritage Building/Landmark
- Trail
- Barn
- Church
- View
- School House
- Cemetery
- Railway
- Lakes/River
- Historic Bridge
- Wildlife
- Information



kilometres